



## Fall Enrollment Projection Markov Transition Model

**Last Updated:**  
**October 14, 2021**

Note on methods: Persistence rates for each class level are calculated and applied to the number of students enrolled in the most recent fall term. The number of new students are estimated to be equal to the number of new students in the previous fall.

Summary Table

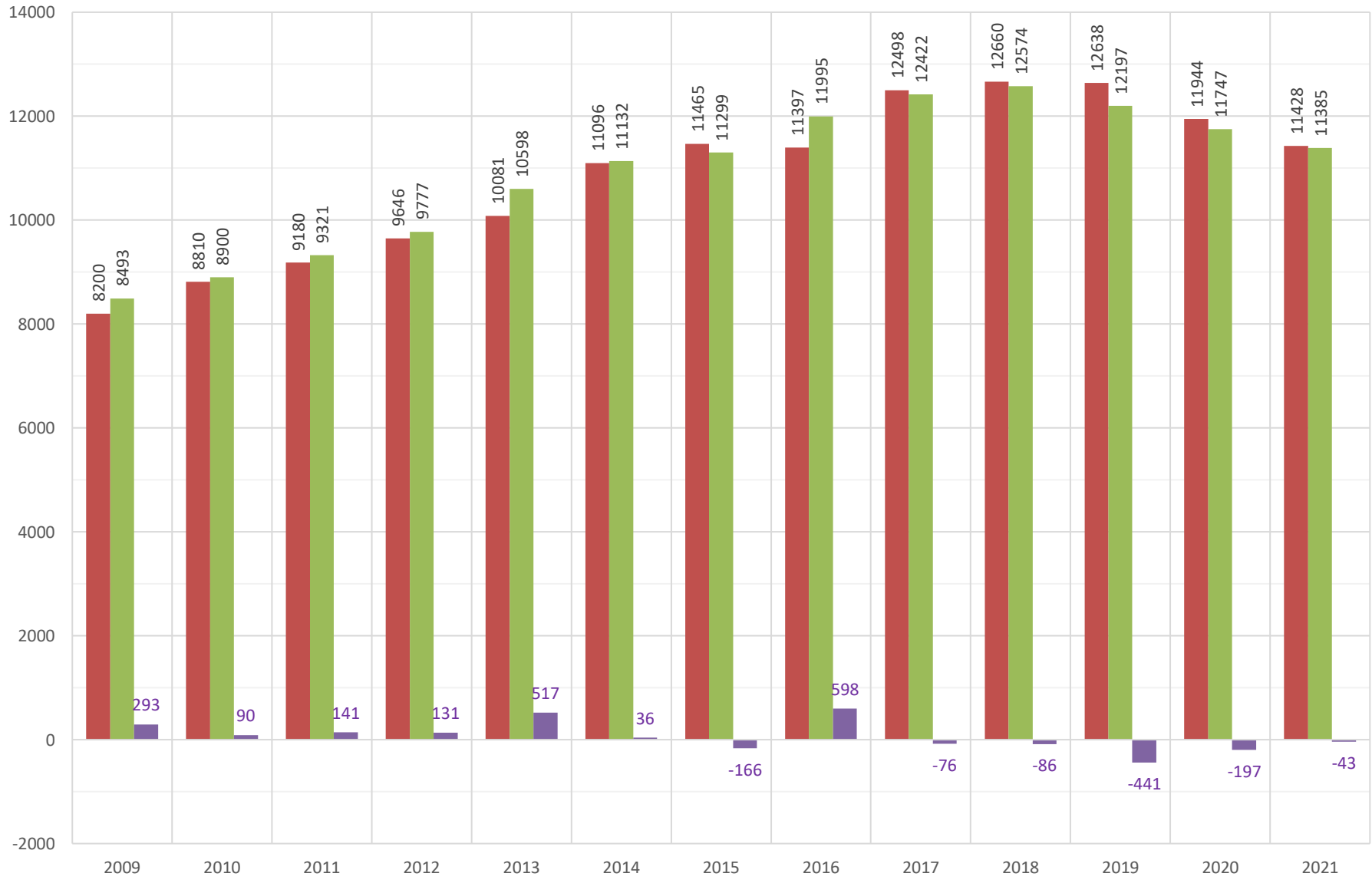
Student Level	Fall 2020 EOT	Fall 2021 Census	Fall 2022 Estimate	Est. 1yr Change (N)	Est. 1yr Change (%)
FRESHMAN	2196	2372	2404	32	1.4%
SOPHOMORE	1915	1855	1920	65	3.5%
JUNIOR	2296	2108	2051	-57	-2.7%
SENIOR	2279	2211	2074	-137	-6.2%
SENIOR 5TH YR	1029	873	820	-53	-6.1%
UNCLASS	100	99	98	-1	-0.6%
GRADUATE	1945	1867	1816	-51	-2.7%
<b>TOTAL</b>	<b>11760</b>	<b>11385</b>	<b>11183</b>	<b>-202</b>	<b>-1.8%</b>

Persistence Rate Comparisons per Starting Level by Year

Student Level	2013-14	2014-15	2015-16	2016-17	2017-18	2018-19	2019-20	2020-21	Average Persistence Rate
FRESHMAN	65%	66%	67%	63%	64%	65%	65%	63%	65%
SOPHOMORE	77%	77%	77%	77%	75%	78%	78%	77%	77%
JUNIOR	77%	78%	78%	78%	79%	82%	82%	81%	79%
SENIOR	42%	44%	41%	40%	42%	41%	42%	39%	41%
SENIOR 5TH YR	34%	34%	32%	33%	34%	30%	32%	29%	32%
UNCLASS	32%	26%	24%	32%	29%	34%	39%	38%	32%
GRADUATE	57%	57%	59%	55%	59%	58%	60%	56%	58%
<b>TOTAL</b>	<b>61%</b>	<b>62%</b>	<b>62%</b>	<b>61%</b>	<b>61%</b>	<b>62%</b>	<b>62%</b>	<b>60%</b>	<b>61%</b>

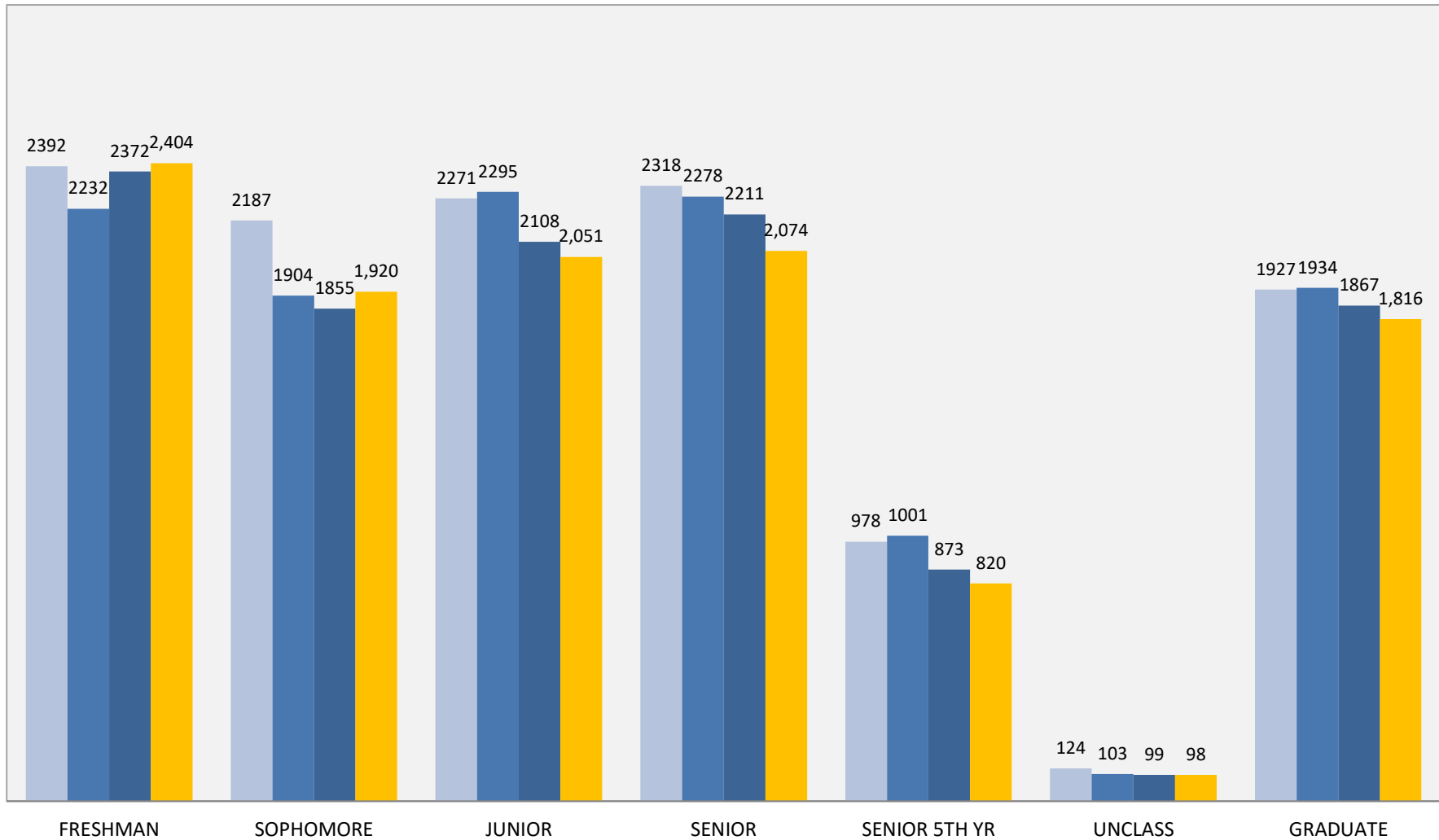
# Accuracy of Enrollment Projections

Estimate Actual Census Delta



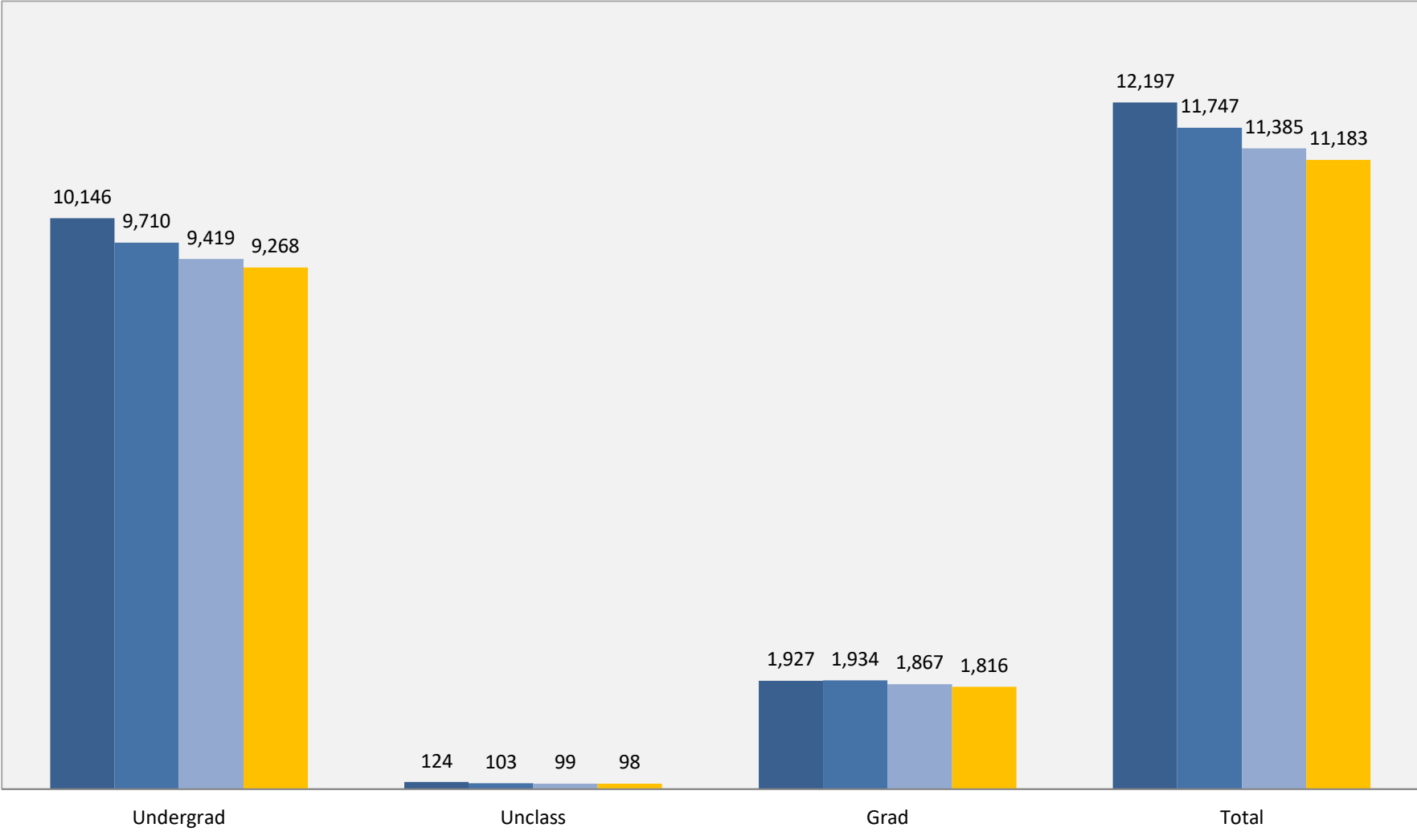
## Fall 2022 Enrollment Projections by Student Level

■ Fall 2019 census (12,197)   
 ■ Fall 2020 census (11,747)   
 ■ Fall 2021 census (11,385)   
 ■ Fall 2022 Estimate (11,183)

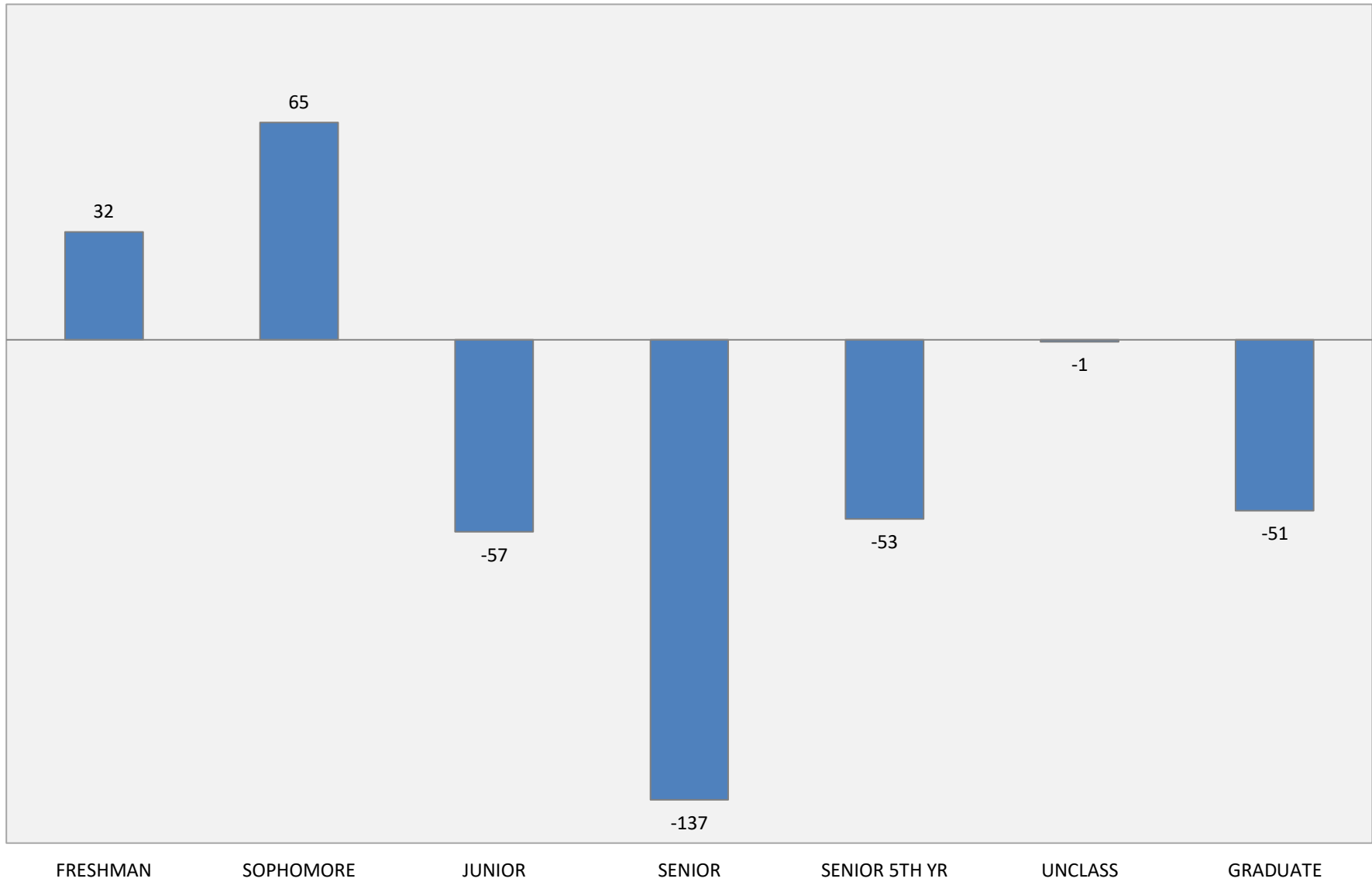


# Fall 2022 Enrollment Predictions Campus Totals

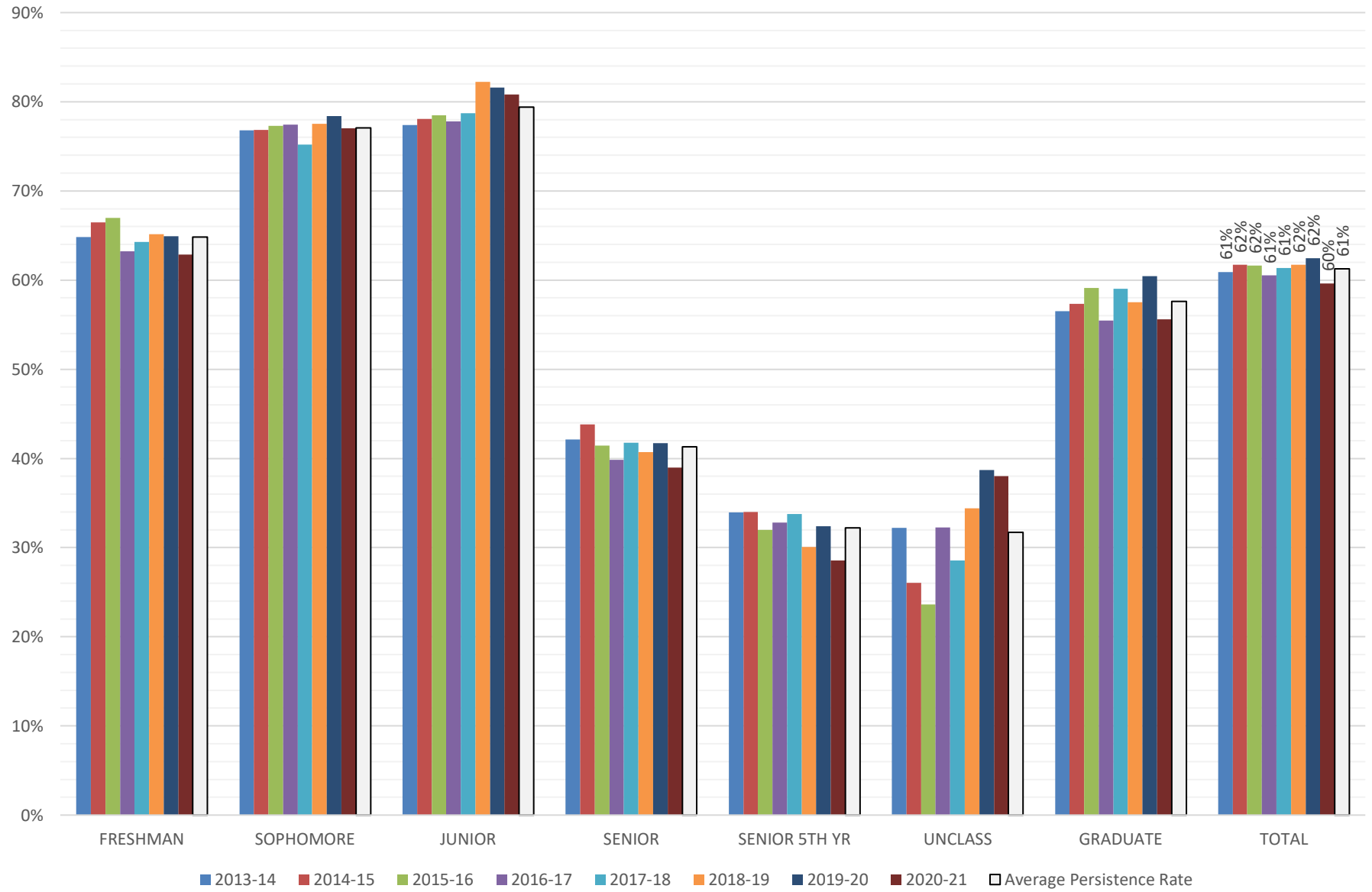
■ Fall 2019 census (12,197)   ■ Fall 2020 census (11,747)   ■ Fall 2021 census (11,385)   ■ Fall 2022 Estimate (11,183)



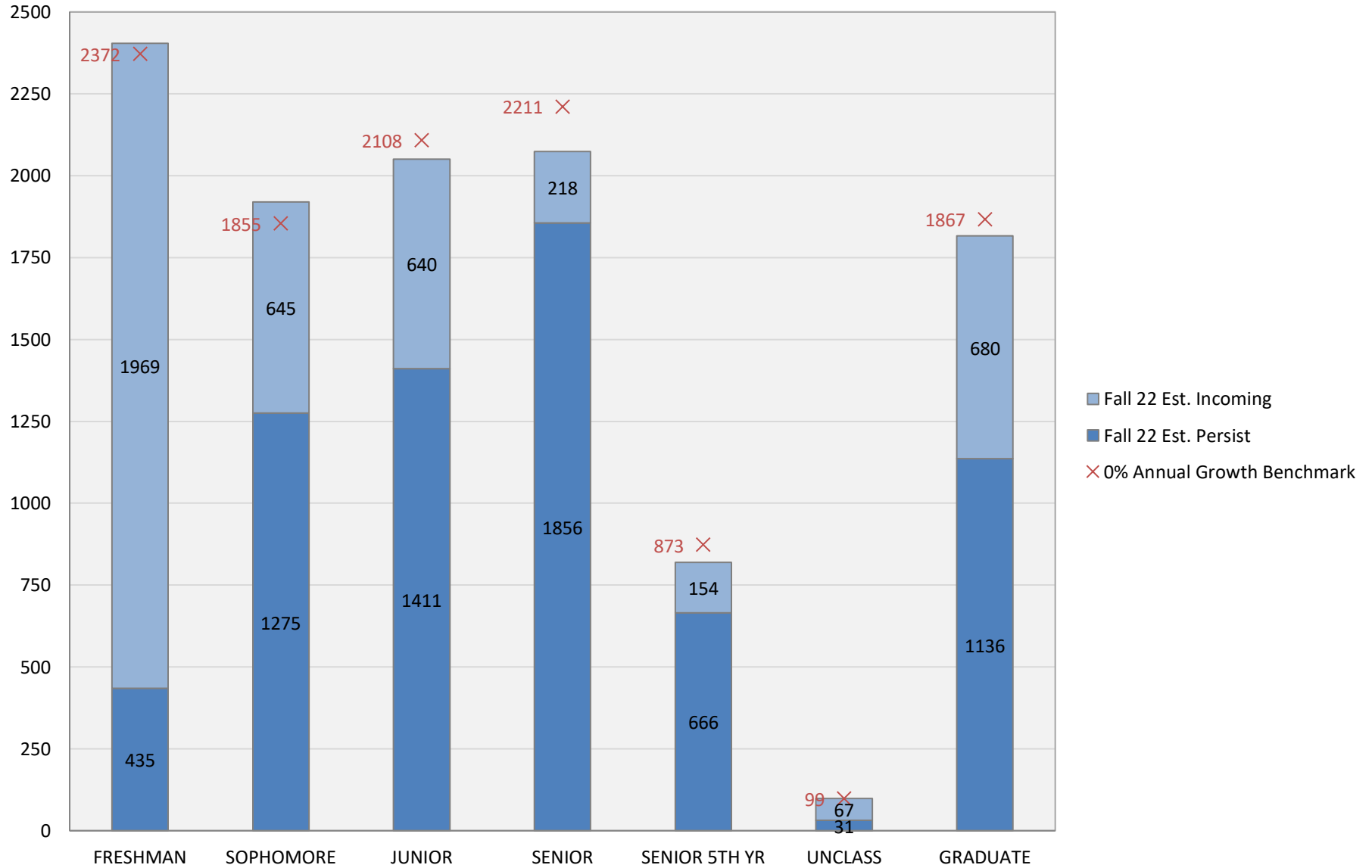
## Fall 2022 Enrollment Projection per Student Level (Delta vs. Fall 2021)



Percent of Students Persisting by Starting Academic Level  
Annual Rates



## Fall 2022 Estimate of Persisting and New Students by Class Level Compared to Growth Benchmarks



# Trendlines of New v. Persisting Enrollment

□ Total    ■ Actual Persisting    ■ Actual New

